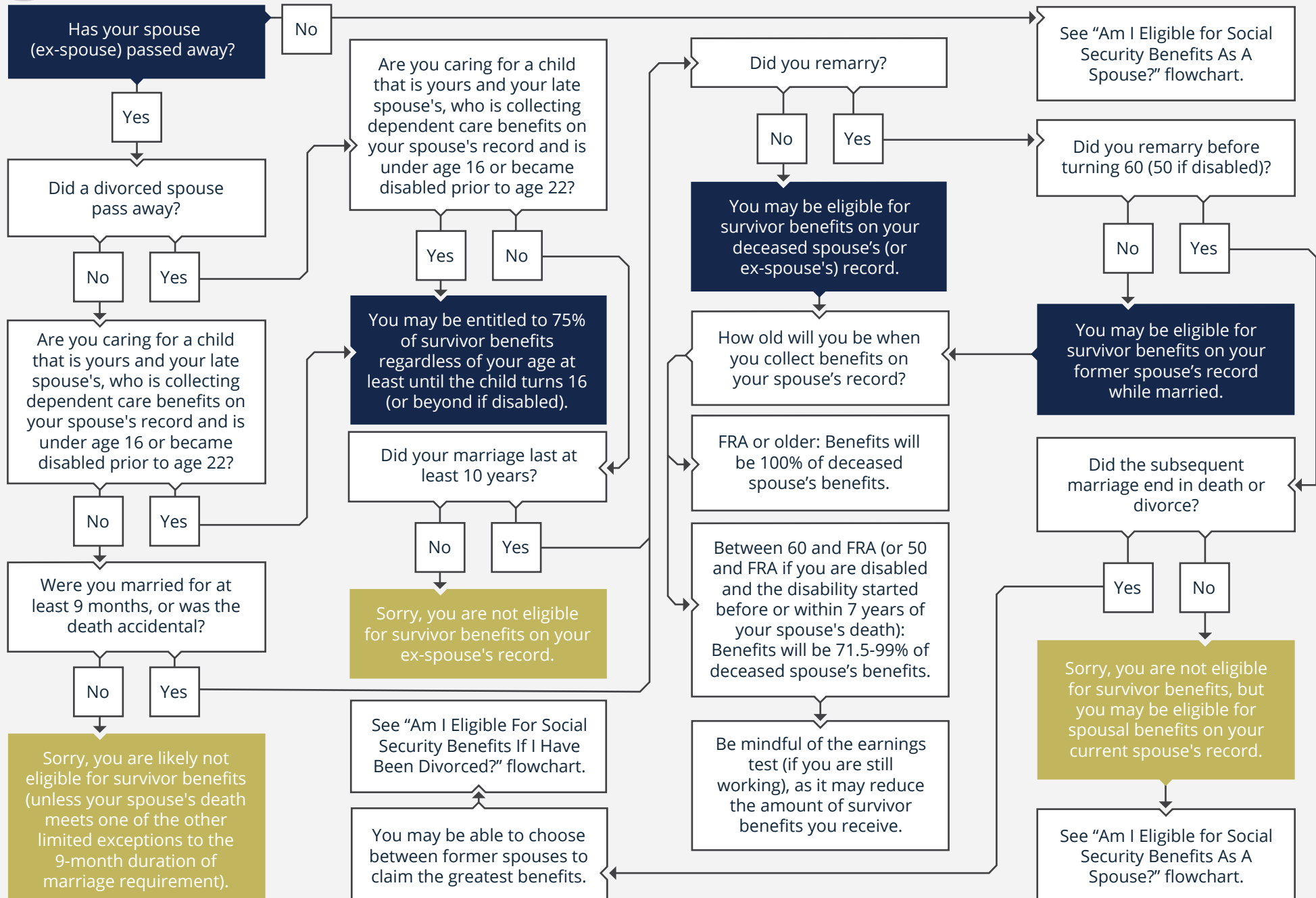


2025 · AM I ELIGIBLE FOR SOCIAL SECURITY BENEFITS AS A SURVIVING SPOUSE?



START HERE



Cameron Valadez is a Financial Consultant with, and securities and advisory services offered through LPL Financial, Member FINRA/SIPC.

This information is not intended to be a substitute for specific individualized tax advice. We suggest that you discuss your specific tax issues with a qualified tax advisor.

Tax and accounting related services offered through Plan-It Business Services DBA Planable Wealth. Plan-It Business Services is a separate legal entity and not affiliated with LPL Financial. LPL Financial does not offer tax advice or tax and accounting related services.

Cameron Valadez, CFP®, EA, AWMA®, CPFA

3850 Vine St Suite 100A Riverside, CA 92507

info@planablewealth.com | 951-900-8850 | <https://planablewealth.com>