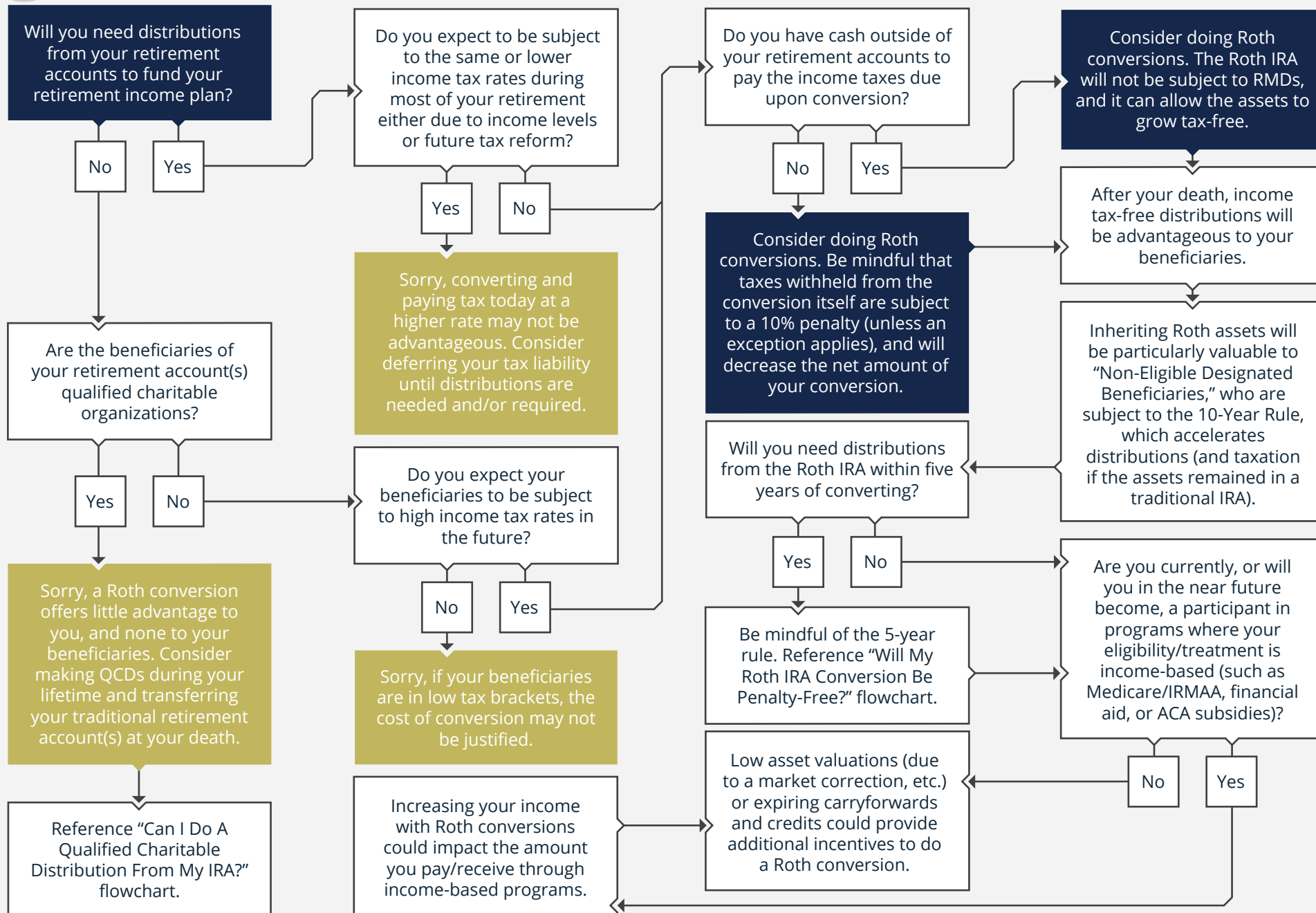


**START HERE**



***Cameron Valadez is a Financial Consultant with, and securities and advisory services offered through LPL Financial, Member FINRA/SIPC.***

*This information is not intended to be a substitute for specific individualized tax advice. We suggest that you discuss your specific tax issues with a qualified tax advisor.*

*Tax and accounting related services offered through Plan-It Business Services DBA Planable Wealth. Plan-It Business Services is a separate legal entity and not affiliated with LPL Financial. LPL Financial does not offer tax advice or tax and accounting related services.*

*Traditional IRA account owners have considerations to make before performing a Roth IRA conversion. These primarily include income tax consequences on the converted amount in the year of conversion, withdrawal limitations from a Roth IRA, and income limitations for future contributions to a Roth IRA. In addition, if you are required to take a required minimum distribution (RMD) in the year you convert, you must do so before converting to a Roth IRA.*

**Cameron Valadez, CFP®, EA, AWMA®, CPFA**

3850 Vine St Suite 100A Riverside, CA 92507

info@planablewealth.com | 951-900-8850 | <https://planablewealth.com>