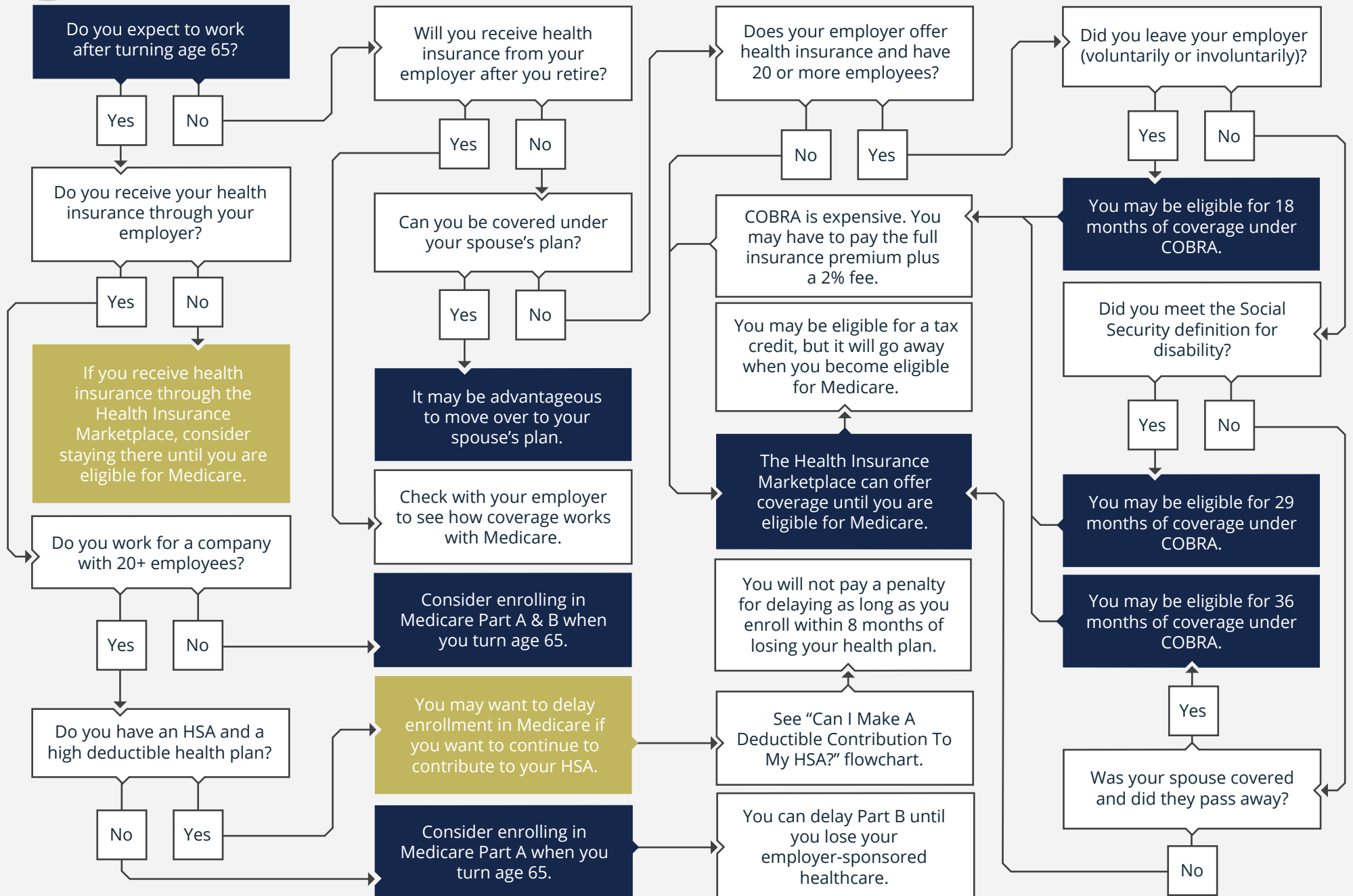


Start Here



Cameron Valadez is a Financial Consultant with, and securities and advisory services offered through LPL Financial, Member FINRA/SIPC.

This information is not intended to be a substitute for specific individualized tax advice. We suggest that you discuss your specific tax issues with a qualified tax advisor.

Traditional IRA account owners have considerations to make before performing a Roth IRA conversion. These primarily include income tax consequences on the converted amount in the year of conversion, withdrawal limitations from a Roth IRA, and income limitations for future contributions to a Roth IRA. In addition, if you are required to take a required minimum distribution (RMD) in the year you convert, you must do so before converting to a Roth IRA.

Cameron Valadez, Partner, CERTIFIED FINANCIAL PLANNER(TM)

3850 Vine St Suite 100A Riverside, CA 92507

info@planablewealth.com | 951-900-8850 | <https://planablewealth.com>